



EVEN ON COLD DAYS.

ENJOYMENT IN WATER WITH
THE PERFECT TEMPERATURE

The water is heated by the sun in summer when the temperatures are rising. An alternative solution for heating the water needs to be provided when the days are shorter and the evenings are cooler. BEHNCKE offers various options for this purpose: from coil heat exchangers and plate heat exchangers, produced in our factory in Putzbrunn, to heat pumps and Sun Plate swimming pool absorbers. When choosing the right product for you, the actual design of the house and the flow temperature of the water play a decisive role.

One of the leading
manufacturers



EWT 80-71 THE ELECTRIC MODEL

Heating element made of Incoloy 825, with thermostatic control 0 – 40°C, with flow switch, surface painted, with two PVC glued threaded couplings DN 40 and plastic mountings.



QWT 100 THE VERSATILE MODEL

A QWT is used to heat the swimming pool water by connecting it to a central heating system. The coil heat exchanger consists of a stainless steel outer casing with a welded-in stainless steel tube coil, complete with an immersion sleeve to accommodate an electronic temperature sensor. The flow temperature can reach 90°C.



PWT HIGH PERFORMANCE WITH MINIMAL MAINTENANCE.

Plate heat exchangers are recommended in particular for connection to boilers with low temperatures or with hot air/hot water pumps or water/water pumps. Plate heat exchangers are actually able to heat your swimming pool with a primary flow of 50°/30°C due to their larger exchange surface. In addition, the PWT is easier to maintain because of its screw system.

POOL HEATING



One filter – three qualities

The right thing for every need.



FEX-3 Filter tank

The FEX-3 filter technology effectively minimises the energy and water consumption of your pool system – as well as the need for chemical disinfection.

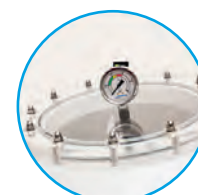
The filters are manufactured with precision to ensure long-term operational safety and besides this, they are also very user-friendly. Crystal clear water with optimum energy consumption: The FEX-3 meets all the requirements of modern swimming pool filters.



DRESDEN³ Further development

The DRESDEN³ filter technology effectively minimises the energy and water consumption of your pool system—as well as the need for chemical disinfection.

Just like all other filters, the DRESDEN³ is manufactured with precision to ensure long-term operational safety. Besides this, it is also very user-friendly. Certified according to **DIN-EN 16713**, it is just perfect for daily use in private swimming pools. Crystal clear water with optimum energy consumption: DRESDEN³ meets all the requirements of modern swimming pool filters.



Acrylic glass lid
with high quality
manometer



larger opening with
a diameter
of 300 mm



emptying of the
container on the
side of the foot

DRESDEN² Filter tanks and systems

The DRESDEN² filter technology effectively minimises the energy and water consumption of your pool system—as well as the need for chemical disinfection.

Just like all other filters, the DRESDEN² is manufactured with precision to ensure long-term operational safety. Besides this, it is also very user-friendly. Certified according to **DIN-EN 16713**, it is just perfect for daily use in private swimming pools. Crystal clear water with optimum energy consumption: DRESDEN² meets all the requirements of modern swimming pool filters.



FILTER TECHNOLOGY

BEHNCKE EXPORT NEWS

01/2021

Who we are

The new EVAstream turbine swimming system

New skimmer model

New measurement / Control and regulation technology

Filter Technology

Pool Heating

From private projects through to municipalities and hotels and all the way to industry

We are your partner for swimming pool technology and water treatment.

BEHNCKE

Progressive production tradition for swimming pool technology – made in Germany

BEHNCKE GmbH has been an established player in the swimming pool sector for several decades. And from the very beginning the company has stood for innovative products in the swimming pool industry. The company based in Putzbrunn is now in its third generation of family ownership and continues to manufacture its products exclusively in Germany with a workforce of more than one hundred employees.

Production in Putzbrunn near Munich focuses on the precision machining of high-quality stainless-steel components and heat exchangers for swimming pools. In addition, the Bavarian colleagues work constantly on the further development and production of BEHNCKE swimming pool control units. The plant in Böhne in Sachsen-Anhalt produces filter tanks and systems made of fibre glass reinforced plastic for crystal clear bathing water (according to the **DIN EN 16713** standard).



Location Putzbrunn



Location Böhne

BEHNCKE
GmbH

PUTZBRUNN / MÜNCHEN

BEHNCKE GmbH
Michael-Haslbeck-Straße 13
D-85640 Putzbrunn/München

Fon: +49 (0) 89 45 69 17 – 0
info@behncke.com

BÜHNE

BEHNCKE GmbH
Stötterlinger Straße 36a
D-38835 Böhne

www.behncke.com





EVAstream

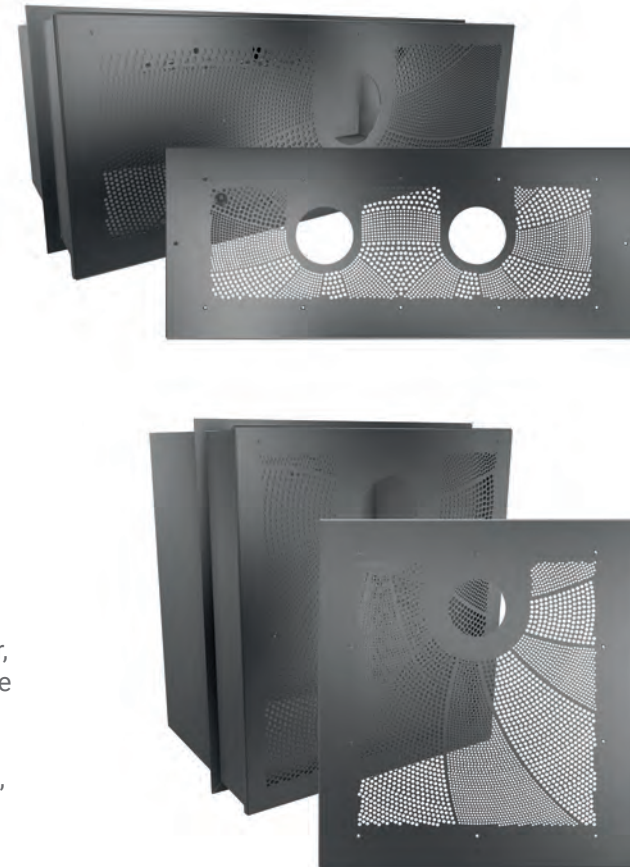
- Can be installed in all types of pools.
- Permanent flow through the housing body and the integral inlet nozzle.
- Pool size minimum 3 x 6 m.

HOME FITNESS & FUN FOR THE WHOLE FAMILY

You want to start the day with a sports session to train for the next competition, or just have fun?

Whether you are a hobby athlete or a competitive swimmer, the EVAstream turbine offers with its individually adjustable power levels the right training for everyone.

The EVAstream turbine ensures a stable water flow unique, authentic swimming experience and is adding a high value to your pool.



INTEGRATED PARTS



BEHNCKE SPLASH CONTROL II

Reliable, cost-efficient, and pre-assembled ready to plug in.

The BEHNCKE Splash Control measuring and control system is a plug-and-play, pre-assembled compact system that is used for water treatment in private swimming pools. Delivered with two dosing hose pumps.

User-friendly for the best results.

The pumps are space-saving directly mounted on the housing.

In addition to all the functions of the Splash Control the Splash Control II has following technical characteristics:

- Color touch display
- Intuitive menu navigation
- Easier configuration
- Temperature sensor
- ModBus communication interface



MEASUREMENT CONTROL AND REGULATION TECHNOLOGY



Surface skimmer B 500 Ultimate

A new benchmark in terms of water level.

With the new surface skimmer B 500 Ultimate, pool owners have a new possibility in the design of their pool.

With the B 500 Ultimate, the pool and its surroundings optically become one. He is the guarantee for a water line very close to an infinity pool. The B 500 Ultimate: minimum water level edge, maximum circulation capacity.

The device impresses with its aesthetic appearance, due to its 422 mm width and only 75 mm high suction opening. Thereby a minimal water level edges can be reached and a high and visually extremely appealing waterline is seen.

Due to the large skimmer flap of the surface skimmer and a suction connection with 2 „internal thread and 2½“ external thread, the pipe friction loss is significantly optimized.



Figure: Skimmer - B 500 Ultimate

The B 500 Ultimate can realize due to its well-thought-out geometry, volume flows from 8 m³ / h - 15 m³ / h. Even large volume swimming pools can be equipped without any loss of functionality.

NEW the B600 Ultimate
with an even larger suction width

The body, the face plate, skimmer weir and sieve insert of the B 500 Ultimate are made from V4-steel (AISI 316), a guarantee for a long lifetime of the entire surface skimmer. The B 500 Ultimate has a calming chamber to accommodate an electronic water level regulator.

The product wins with many interesting details such as high quality V4A steel and a suction opening at a minimum height. Special emphasis was taken on flexible application areas of the skimmer for concrete, liner as well as tile pools.



Figure: Skimmer B 050

Surface skimmer B 050

The perfect surface skimmer for the smallest of the pools

This surface skimmer was developed to ensure sustainable quality even in the entry-level segment. He impresses with his compact and puristic design and despite low volume flow due to its function.

The B050 works due to the strainer basket without additional inspection opening in the pool area. It also serves as a high-quality replacement, so that even after a liner change reliably for many years is to be carried out. Due to the use high-alloy stainless steels, it is a guarantee for a long lifetime.

INTEGRATED PARTS

SWIMMING POOL CONTROL UNIT

DIALOGUE OF THE FUTURE. ANYWHERE IN THE WORLD. WITH A BEHNCKE CONTROL UNIT.

BEHNCKE CONTROL 1.3

SIMPLE. MORE.

Easy to operate.

Pool enjoyment begins already with the control unit with a BEHNCKE Control 1.3 – because it is not only simple to operate, but now also offers even more intelligent functions. The connection of an additional display is one of the many options available with the BEHNCKE Control 1.3. This makes it even easier to control, for example, from the patio or other living rooms. (Protection class IP 2X)

It offers a wide range of programming options and extensive connectivity options. In addition, it is distinguished by a clearly arranged user interface. The BEHNCKE Control 1.3 can be fully controlled with its own smartphone app.

The BEHNCKE Control 1.3 is available in six complete programming languages (German, English, French, Swedish, Dutch and Russian).



MEASUREMENT CONTROL AND REGULATION TECHNOLOGY