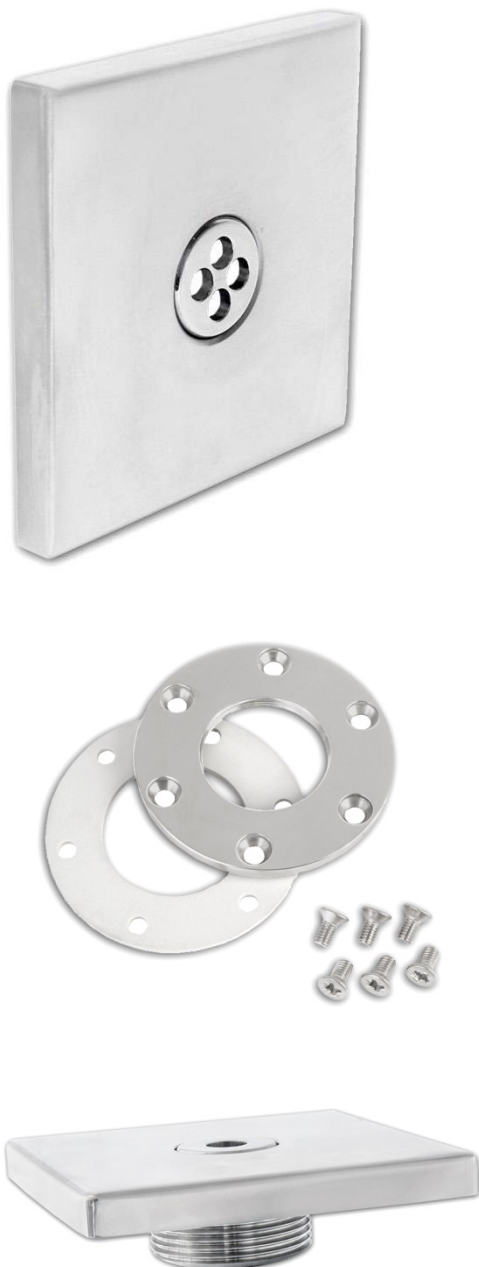


CUBE Line Wall inlet nozzles Floor inlet nozzles made of stainless steel (AISI 316)



An elegant design in harmony with perfect performance. CUBE Line from BEHNCKE. The state of the art in flush fittings.

BEHNCKE's developers realized at an early stage that the demands placed on the design and style of flush fittings for pool design, landscaping, and interior design were becoming increasingly reduced and puristic.

With the new CUBE-Line series BEHNCKE has demonstrated its innovative strength once again and in doing so, as with the award-winning "B 500 Slim" surface skimmer, has provided proof of its trendsetting brand image: Always an idea ahead!

CUBE Line wall inlet nozzle with an M 45 thread and flange set.

In the case of this wall inlet nozzle the thread has been integrated with the faceplate into one unit. The result is constant reliability thanks to its high degree of structural stability.

An extremely short overall height allows the faceplate to lie flat and positively locked against the pool wall. In addition to the aesthetic aspect this also means a significantly reduced danger of injury in comparison to conventional inlet nozzles.

Five nozzle dimensions (1 x 7,9 mm, 2 x 7,9 mm, 3 x 7,9 mm, 4 x 7,9 mm and 25,1 mm) are available, allowing a perfect projection distance and optimal adaptation to the respective pump performance and pool size.

CUBE Line wall inlet nozzle with a 1 1/2" thread.

This version is equipped with a long thread. No flange is required, resulting in considerably simplified installation, especially where large installation distances are involved, e.g. with tiled pools. As this nozzle is compatible with almost any universal wall bushing, it is extremely flexible and suitable for customized applications.

Both inlet nozzles are made from very high-grade and extremely resistant stainless steel (AISI 316), the visible surfaces also being perfectly mirror polished by means of an elaborate process.

CUBE Line
Wall inlet nozzles
Floor inlet nozzles
made of stainless
steel (AISI 316)



CUBE Line floor inlet nozzles, 125mm, flangeable

CUBE Line floor inlet nozzle, flangeable, with adjustable volume.

This high quality, and in the CUBE Line design extremely aesthetic, floor inlet nozzle is characterized primarily by its extremely low installation height. From the practical aspect of a significantly reduced danger of injury, this fitting is installed with positive locking in the pool floor.

The flangeable version is highly suitable for liner pools and pools with an alternative seal coating. CUBE Line floor inlet nozzles are available for these requirements in 3 optional sizes (90, 100, 125 mm). These sizes, which were developed by BEHNCKE's designers, are matched to the most popular tile sizes and can therefore be perfectly adapted to meet individual planning specifications.

Thanks to its precise volume adjustability, this faceplate is in a position of being able to perfuse extremely uniformly even complex piping systems or remotely located pool areas. This applies particularly where requirements such as asymmetrical free-form pools have to be met or where no piping on the reverse return ("Tichelmann") principle is possible.

CUBE Line floor inlet nozzle with a 1 1/2" thread, volume adjustable.

This floor inlet nozzle has the same aesthetic, qualitative and structural features as the flangeable version. In contrast to this, however, it is equipped with a long 1 1/2" thread, enabling large installation distances to be bridged, which once again considerably facilitates the installation work.

Both inlet nozzles are made from very high-grade and extremely resistant stainless steel (AISI 316), the visible surfaces also being perfectly mirror polished by means of an elaborate process.



Basic element for floor inlet nozzles, volume adjustable



CUBE Line floor inlet nozzles 100 mm

Your authorized dealer